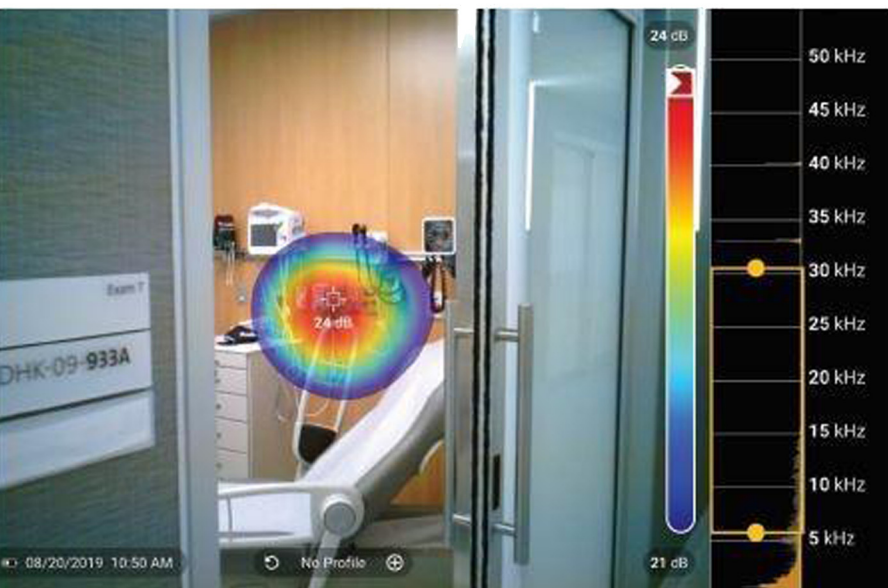


# ii900 Acoustic Imager in Health Care

The Fluke ii900 locates gas and air leaks in medical facilities which can be especially critical to patient care and facility efficiency.

Pin-pointing any and all leaks in medical facilities is important, and with the ii900 Acoustic Imager, you can detect a 0.11 l/min leak from 3 meters away or a 0.20 l/min leak from 10 meters away.



Here are some examples of how air, gas, and vacuum leak detection can be useful in medical facilities:

- Identifying leaks at medical gas service outlets and flexible hoses
- Pin-pointing leaks in pneumatic tube conveyance systems and controls
- Verify integrity of compressed air systems
- Maximizing infrastructure capacity
- Ensuring critical gas delivery to/from operating rooms on campus (CI, O2, Nitrogen, etc.)
- Accessing tricky and hard-to-reach critical vacuums
- Ensuring standard compressed air system integrity end to end infrastructure
- Identifying steam leaks
- Ensuring process vessel leak integrity