

DATA SHEET

BXAMGR

BOXILLA® 3.4 KVM AND AV/IT MANAGER

24/7 TECHNICAL SUPPORT AT 877.877.2269 OR VISIT BLACKBOX.COM



OVERVIEW/SPECIFICATIONS

BOXILLA 3.4 ENTERPRISE LEVEL KVM AND AV/IT MANAGER DATA SHEET

INTRODUCTION

Boxilla® is an Enterprise Level KVM & AV/IT system management platform that works with Emerald Unified KVM (EMD4000T, EMD4000R, EMD2000SE-T, EMD2000SE-R, EMD2002SE-T, EMD2002SE-R, EMD200DV-T, EMD2000PE-T, EMD2000PE-R, EMD2002PE-T, EMD2002PE-R) and DKM (multiple part numbers).

Boxilla provides a centralized, easy-to-use command center that gives you full monitoring and control of not just devices, but your entire system, all across the enterprise. Control user access. Monitor device status. Proactively diagnose and address network problems before they occur. Upgrade thousands of remote devices with one click, without ever leaving your seat, let alone the building.

FEATURES

- **COMMAND CENTER DASHBOARD PROVIDES AN INSTANT SNAPSHOT OF THE KVM NETWORK**
- **MANAGE AN UNLIMITED NUMBER OF ENDPOINTS IN YOUR ENTERPRISE-LEVEL IP-BASED KVM SYSTEM**
- **CONTROL DEPLOYMENTS, MONITORING, UPGRADES, TROUBLESHOOTING, SECURITY, STATUS—EVERYTHING!**
- **USE WITH EMERALD TO PROVIDE A SOFTWARE BASED, FUTURE-PROOF SOLUTION**
- **PROVIDES MANAGEMENT AND UNLIMITED DEVICE SCALABILITY FOR EMERALD UNIFIED KVM AND DKM KVM SYSTEMS**
- **DEPLOY, MONITOR, AND MANAGE LARGE-SCALE ENTERPRISE SYSTEMS**
- **PROVIDES DEVICE DISCOVERY AND CONFIGURATION, USER AUTHENTICATION**
- **CENTRALIZED UPGRADE OF ENDPOINT DEVICES**
- **PERFORMANCE MONITORING**
- **PROVIDES ACTIVE DIRECTORY SUPPORT**
- **SUPPORTS CONFIGURATION OF DNS SERVER SETTINGS FOR ACTIVE DIRECTORY**
- **INTEGRATES USB EXTENDER TO PROVIDE UP TO 480 MBPS USB SPEED AND ALLOW SHARING**
- **PUSHES ALERT INFORMATION TO SYSLOG SERVER**
- **SUPPORTS NTP CLIENT**
- **EXTENDS CONNECTION MANAGEMENT GROUPS FROM 10 TO 100**
- **ADDS TIME ZONE SUPPORT**

SPECIFICATIONS FOR BOXILLA – ENTERPRISE LEVEL KVM AND AV/IT MANAGER (BXAMGR)	
APPROVALS	CE, FCC, UL, RoHS2
CONNECTORS	(1) 10/100/1000 autosensing Ethernet, Serial, USB 2.0, USB 3.0
POWER	AC input: 100–240 V, 50–60 Hz
1U RACKMOUNT CHASSIS	19" wide, robust metal construction
DIMENSIONS	1.73" H x 17.3" W x 10.6" D (4.4 x 44 x 26.8 cm)
WEIGHT	Unit: 10.96 lb. (4.98 kg); Shipping: 14.92 lb. (6.78 kg)
COMPATIBILITY	Works with Emerald Unified KVM and Black Box DKM



WHAT'S INCLUDED/APPLICATION DIAGRAM

BOXILLA 3.4 ENTERPRISE LEVEL KVM AND AV/IT MANAGER (BXAMGR)

WHAT'S INCLUDED WITH THE BOXILLA (BXAMGR)

- (1) BOXILLA – ENTERPRISE LEVEL KVM AND AV/IT MANAGER
- (1) AC POWER CORD

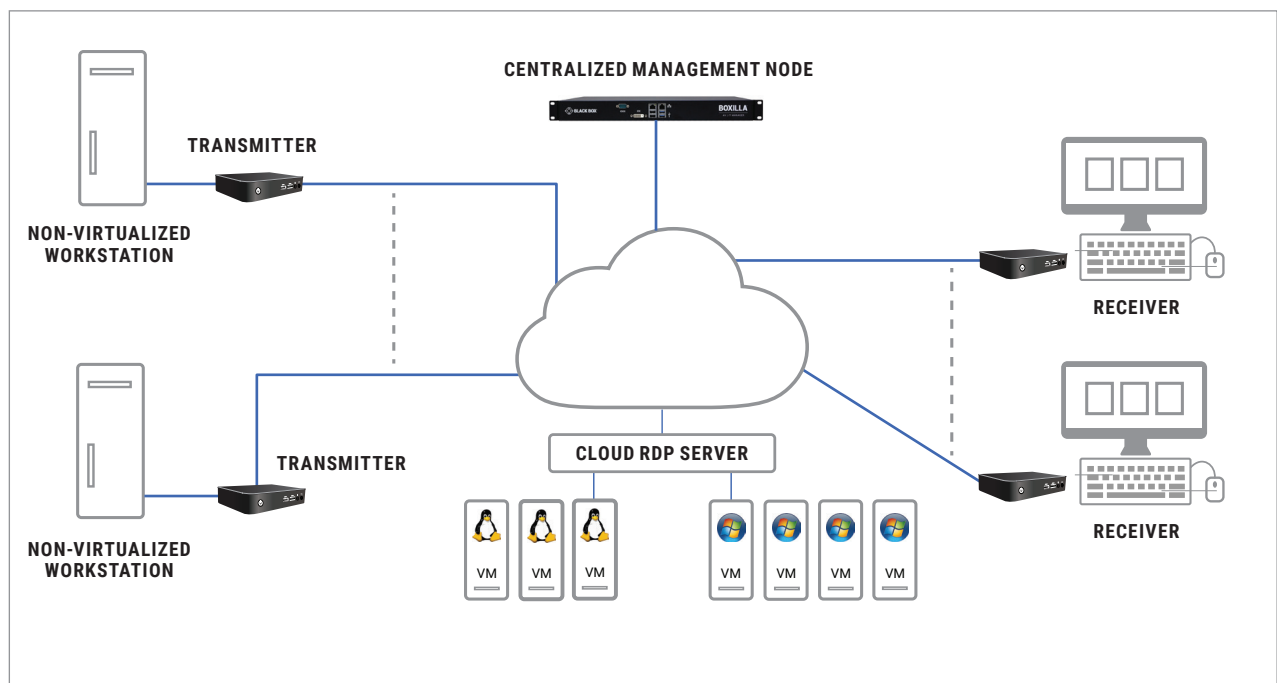
FRONT VIEW



BACK VIEW

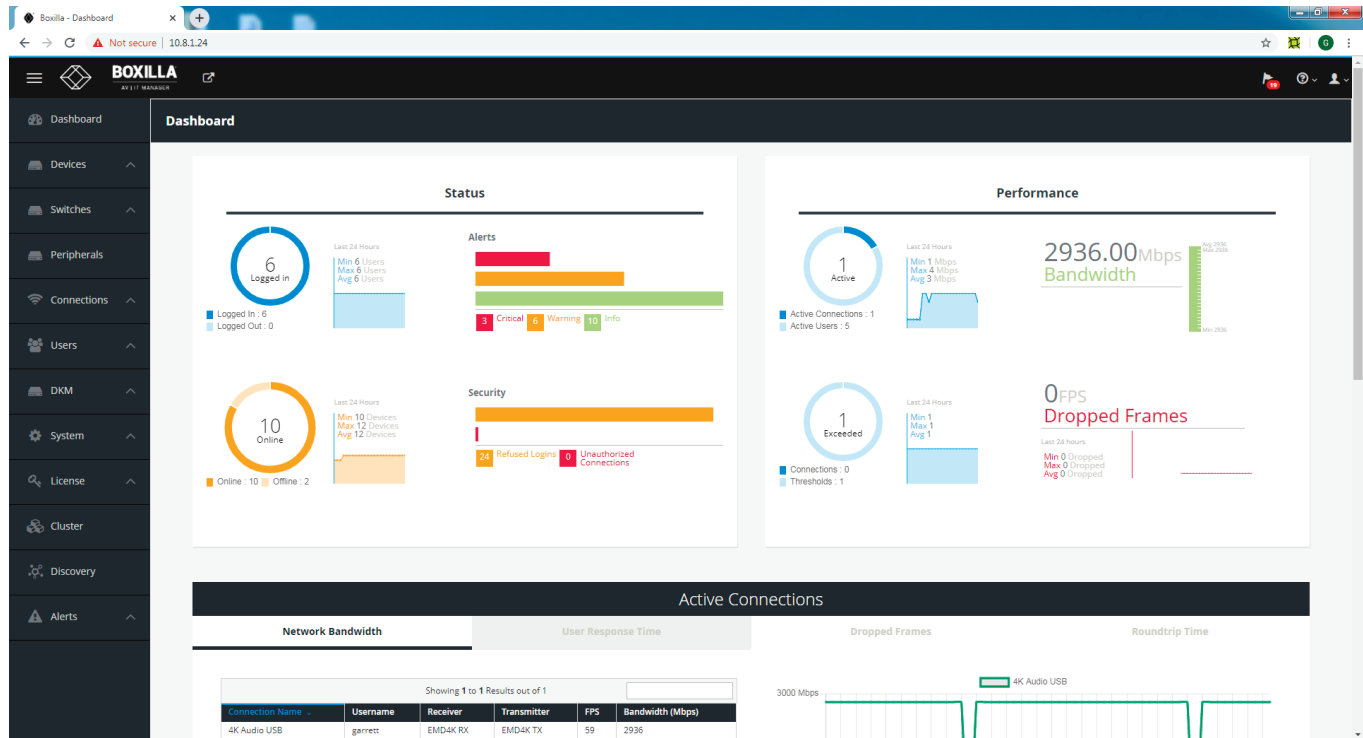


APPLICATION DIAGRAM



BOXILLA DASHBOARD

BOXILLA DASHBOARD



Dashboard drill-down:

Charting of key performance parameters:

- Bandwidth
- Frame rate
- User changes
- Power

Configure and Create:

- Manage domains
- Users
- Connections
- Systems
- Groups



ORDERING INFORMATION

ITEM	CODE
Boxilla	
25 Users, Devices or Connections	BXAMGR
50 Users, Devices or Connections	BXAMGR-50
100 Users, Devices or Connections	BXAMGR-100
200 Users, Devices or Connections	BXAMGR-200
300 Users, Devices or Connections	BXAMGR-300
Unlimited Users, Devices or Connections	BXAMGR-ULT
Upgrade Licenses	
Add 25 Users, Devices or Connections	BXAMGR-LIC-25
Add 100 Users, Devices or Connections	BXAMGR-LIC-100
Add 200 Users, Devices or Connections	BXAMGR-LIC-200
Add 300 Users, Devices or Connections	BXAMGR-LIC-300
Add Unlimited Users, Devices or Connections	BXAMGR-LIC-ULT
Licenses for Active and Standby Boxilla	
25 Devices	BXAMGR-LICBAK-25
100 Devices	BXAMGR-LICBAK-100
200 Devices	BXAMGR-LICBAK-200
300 Devices	BXAMGR-LICBAK-300
Unlimited Devices	BXAMGR-LICBAK-ULT

DISCLAIMER

Black Box Corporation shall not be liable for damages of any kind, including, but not limited to, punitive, consequential or cost of cover damages, resulting from any errors in the product information or specifications set forth in this document and Black Box Corporation may revise this document at any time without notice.

ABOUT BLACK BOX

Black Box is a world leading technology solutions provider specializing in complete high-performance KVM, professional A/V signal distribution and extension and switching solutions for mission-critical applications. Black Box is dedicated to delivering superior project engineering, technical support, and 24/7 customer service you can rely on for your most critical operations.

Every day, our customers trust us to design, integrate, and maintain reliable control room solutions for broadcasting, post-production, stadiums & arenas, medical, air traffic control, oil & gas, government & military, and utility industries. Leave the tech to us and our comprehensive technology solutions will deliver secure connections, fast-response times, real-time collaboration and more.

FILENAME: BXAMGR_DS_REV3.4.PDF

© COPYRIGHT 2020. BLACK BOX CORPORATION. ALL RIGHTS RESERVED.

